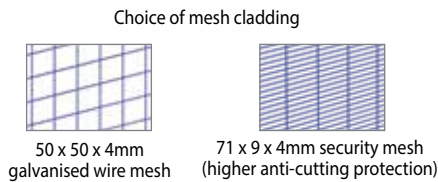
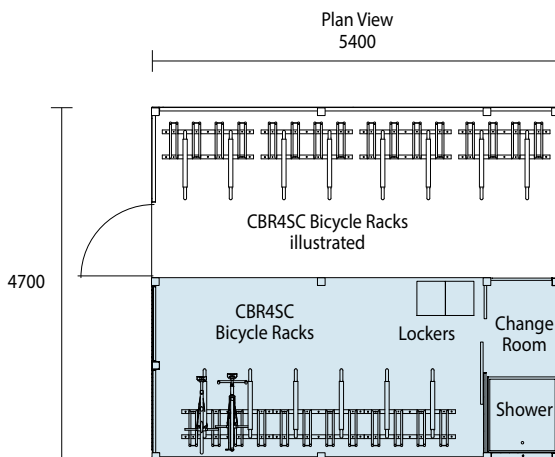
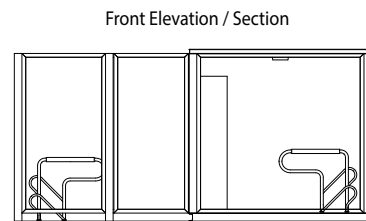
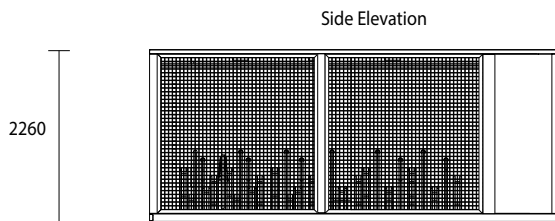


Product Range > **End-of-Journey** > Modules

**UBC02**

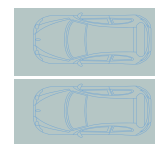


In underground installations, modules can be easily connected to mains power and water / drainage services and can be expanded to 2, 3 or more car spaces providing secure cages catering for a larger number of cyclists. The Securabike modular design allows for the complete package to be delivered to the site in kit form and easily assembled thus avoiding the need for major building work.



Modular wire mesh panels used to expand to 2 car spaces

UBC01 Module (Covered Top)



Converting 2 car spaces

Material Specifications (General)	
Structure	100 x 100 / 100 x 50 steel sections / galvanised / powder coated in a range of colours
Cladding	50 x 50 x 4mm / 71 x 9 x 4mm steel mesh / metal cladding / galvanised / powder coated in a range of colours

